

GRIP

Ergonomic and cost effective sliding door handle



GRIP

Ergonomic and cost effective sliding door handle

FEATURES

Grip is an ever-growing range of handle bars specifically developed for modern sliding door wardrobes. The variety of shapes and the sober design of these handle bars are in line with modern wardrobe conception. There are versions for doors from 10mm up to 19mm thickness and ensure a compact construction of sliding door wardrobes with no handles sticking out and disturbing during opening and closing. The good grip has given the name to the range, despite low built-up on the edge of the cabinet door.

The range is available in different finishes and the products can be fitted with the fixing holes required by the customer during the production process. The products can be easily packed together with the panels in the flat-pack furniture box.



BENEFITS

The profiling based on roll forming technology generates a stable and stiff construction. The Grip range stands out with many features and benefits:

- *Cost optimised shaping and sustainable use of material*
- *Ergonomic grip zone*
- *Ease of assembly*
- *Fitting for many door thicknesses – beside the standard size, every model is available for different door thicknesses on request*
- *Many standard finishes are available and special finishes are possible on request*
- *Precision of the product to the millimetre*
- *Optionally, the handle bar can be fitted with a protective film for care during handling, packaging, transport and assembly*
- *Products can be packed according to customer specification.*

Grip is the leading range of handle bars for modern wardrobe sliding doors.

AVAILABLE MODELS

Functional Dimensions

The Grip range covers currently 9 different sections. More traditional design like Ulf or Kim or modern design like Ralf are available to equip all kinds of wardrobe design.

In case you are looking for a specific shape, we can realise your special model to your specifications.

Length

Gripp handle bar are produced to measure. You define the length and the eventual position of the fixing holes and we deliver the ready-to-assemble product to you.



Ulf



Paul



Amy



Britt



Jacky



Kim



Lena



Max

FINISHES

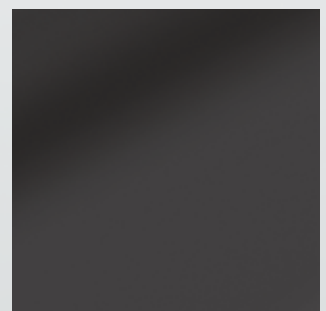
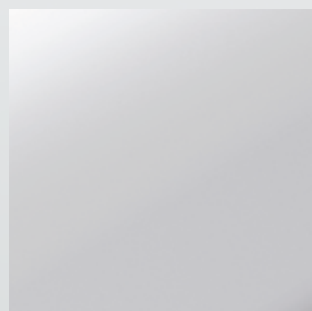
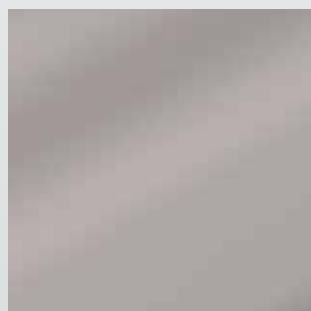
Grip handle bars are produced with high quality pre-coated steel material, to ensure a constant quality and a constant finish and colour.

The different standard finishes available for the Grip range are: **zinc plated, nickel mat, titan grey, white, black.**

Upon request and subject to extra charge, other colours and finishes are available.



Ralf



VISION & MISSION

Well-equipped and well-functioning furniture in all price categories should contribute to wellbeing all over the world in the 21st century. Rennerich are contributing with smart sustainable solutions at the right price to achieve customer expectations in that field.



PRODUCTION

With over 70 employees in two plants with a total surface of 8.800 m², Rennerich are producing every year several millions of linear meters of roll formed furniture accessories like wardrobe tubes, sliding door profiles, sliding door handles and other furniture construction profiles. State-of-the-art equipment for stamping, roll forming and packaging ensure best-in-class performance.

QUALITY MANAGEMENT

The quality management applied by the company corresponds to the high expectations of the industry; quality is lived by the whole team. A tight and efficient organisation, performant equipment to the latest quality standards and clearly defined processes throughout the company ensure a constant quality level of all products and the respect of agreed lead times.



PORTFOLIO

Wardrobe tubes

Oval wardrobe tubes ensure orderly and safe storage of clothing in free-standing or walk-in wardrobes at leading manufacturers in Germany and worldwide.



Grip EN - 05/2017

Sliding door mechanisms

Overslide sliding door mechanisms allow quick and practical access to wardrobe content with price conscious and quality leading manufacturers worldwide.



Handle profiles

The Grip sliding door handle portfolio convinces through large choice of shapes and finishes and constant quality, with standard designs or models made to customer requirement.



Connection bars

Quickbar is the innovative solution for the top connection of bottom cabinets in kitchen and bathroom applications. Compact, strong and available as tool less version for flat-pack furniture or for factory assembled furniture as well.



Rollforming

More than a decade of experience in roll forming components for the furniture industry and other applications have turned Rennerich into a leading company in that field.



Stamping

Stamped components in steel, from a simple bracket to complex components are part of the competency of Rennerich since the beginning of the activity in furniture applications and other industries as well.



Rennerich GmbH

Otto-Hahn-Straße 19- 33161 Hövelhof - Deutschland

Phone: +49 52 57 98 41 - 0 - Fax: +49 52 57 98 41 - 41

E-Mail: info@rennerich-gmbh.de

Web: www.rennerich-gmbh.de